

Refinery



Power Plant



Process Industries



Oil & Gas



VALVES THAT POWER EVERY INDUSTRY

Universal Expertise: Valnexus valves are engineered to meet the unique demands of every industry, ensuring safety, efficiency, and reliability across applications.

Innovation in Design: Advanced engineering and continuous R&D ensure Valnexus valves deliver cutting-edge performance across evolving industrial needs.

www.valnexus.in





ABOUT VALNEXIS CONTROLS

Industrial Control Valves & Automation Solutions

Valnexus delivers precision-engineered control valves and intelligent automation systems designed to optimize industrial performance. Our solutions ensure seamless process control, enhanced safety, and maximum efficiency across diverse sectors—from manufacturing and energy to water treatment and chemical processing.

With a commitment to innovation and reliability, Valnexus empowers industries to achieve operational excellence through advanced engineering and smart automation integration.

Specializing In:

- Control Valves
- Jacketed Valves
- PFA Lined Valves
- Pneumatic Actuated Valves
- Automation Accessories
- Control Valve Repair & Refurbishment

Manufactured by Smart Engineering and Services,
Thane, MH, India



OUR VISSION

To set the global standard in industrial flow control and automation—delivering precision, safety, and innovation that empower industries to achieve sustainable excellence.



OUR MISSION

Valnexus designs and delivers precision-engineered control valves and automation solutions that ensure safety, efficiency, and reliability across industries. Through innovation, quality, and customer-focused service, we empower businesses to achieve seamless process control and sustainable operational excellence.



OUR VALUES

- Integrity
- Innovation
- Customer Commitment
- Engineering Excellence
- Quality First Approach



Trusted Flow Performance

YOUR TRUSTED FLOW CONTROL PARTNER

Advanced Valve Engineering Solutions

VALNEXIS delivers advanced valve engineering solutions that enhance process efficiency, safety, and reliability across diverse industries. By combining manufacturing excellence with robust service support, we provide complete lifecycle solutions for control valves and automation systems—empowering industries with innovation, precision, and trust.

INDUSTRIES WE SERVE

Valnexis solutions are trusted across a wide spectrum of industries, ensuring precision, safety, and reliability wherever process control is critical:



Chemical



Pharmaceutical



Oil & Gas



Power Plants



Water Treatment



Food & Beverage



Process Industries

COMPLETE LIFECYCLE SUPPORT

Valnexis provides end-to-end solutions that cover the entire lifecycle of industrial valves and automation systems, ensuring long-term reliability and performance:



Valve
Manufacturing



Automation
Solutions



Instrumentation
Supply



Valve Repair &
Refurbishment



Shutdown &
AMC Services

2 WAY GLOBE CONTROL VALVE

Application-oriented control valve for precise flow regulation in demanding process conditions.

Size: 1/2" to 16"

Materials of Construction (MOC):

- CS | SS 304 | SS 316 | Special Alloys

Typical Applications:

- Steam | Water | Oil | Gas | Chemical Fluids

Technical Options:

- Trim Materials: SS 304 / SS 316 / Hardened SS / Special Alloy
- Flow Characteristics: Linear / Equal Percentage / Quick Opening
- Leakage Class: ANSI Class IV / V / VI

Key Features:

- High control accuracy
- Rugged & maintenance-friendly design



3 WAY GLOBE CONTROL VALVE

Designed for mixing and diverting applications where stable and repeatable control is required.

Size: 1" to 8"

Materials of Construction (MOC):

- CS | SS 304 | SS 316 | Special Alloys

Typical Applications:

- Heat Exchangers | Temperature control | Process mixing

Technical Options:

- Trim Materials: SS 304 / SS 316 / Special Alloy
- Flow Characteristics: Linear / Equal Percentage
- Leakage Class: ANSI Class IV to VI

Key Features:

- Smooth flow transition
- Stable performance under variable load



JACKETED CONTROL VALVE

Specially designed for processes where fluid temperature must be maintained to prevent solidification, crystallization or viscosity changes.

The outer jacket allows circulation of steam, hot oil, or cooling media, ensuring uninterrupted flow and consistent control.



Size: 1/2" to 6"

Jacket Media:

- Steam | Hot Oil | Thermal Fluid | Cooling Water

Materials of Construction (MOC):

- CS | SS 304 | SS 316 | Special Alloys

Technical Options:

- Trim Materials: SS 316 / Hardened SS / Special Alloy
- Flow Characteristics: Equal Percentage / Linear
- Leakage Class: ANSI Class IV / V / VI

Key Features:

- Prevents choking & pipeline blockage
- Maintains uniform process temperature
- Ideal for high-viscosity & molten media

PFA LINED CONTROL VALVE (GLOBE/BALL/BUTTERFLY)

Designed for highly corrosive and aggressive chemical applications

Size: 1/2" to 12"

Materials of Construction (MOC):

- CS + PFA | SS + PFA | Special Alloy + PFA

Typical Applications:

- Acids | Alkalis | Chemical & Pharma Processes

Key Features:

- Excellent corrosion resistance
- Leak-proof lining and long service life





PNEUMATIC ACTUATED BALL VALVE

Reliable on-off and control solution for automated process systems.

Size: 1/2" to 8"

Materials of Construction (MOC):

- CS | SS 304 | SS 316 | Special Alloys

Actuation:

- Double Acting / Spring Return

Key Features:

- Fast response
- Compact actuator design

PNEUMATIC ACTUATED BUTTERFLY VALVE

Suitable for large flow applications with low pressure drop.

Size: 2" to 24"

Materials of Construction (MOC):

CS | SS 304 | SS 316 | Special Alloys

Key Features:

- Lightweight & compact
- Easy installation
- High flow efficiency



ACCESSORIES – READY STOCK

We maintain ready inventory of essential automation accessories.

- Electro Pneumatic Positioners
- Smart Positioners
- Air Filter Regulators (AFR)
- Solenoid Valves
- Trusted Brands
- Tested Quality
- Immediate Availability



PNEUMATIC ACTUATED FLUSH BOTTOM VALVE

Designed for complete discharge of process media from reactors and storage tanks, ensuring zero hold-up and reliable automated operation.

Size: 2" X 1.½" to 4" X 3"

Materials of Construction (MOC):

- CS | SS 304 | SS 316 | SS 316L | Special Alloys

Applications::

- Chemical reactors | Pharmaceutical vessels | Slurry handling | Viscous fluid discharge | Polymer & resin systems

Key Features:

- Zero dead space design for complete drainage
- Bubble-tight shut-off
- Suitable for slurry and high-viscosity media
- Fast and reliable pneumatic operation

CONTROL VALVE REPAIR & REFURBISHMENT SERVICES

VALNEXIS™ provides professional repair and restoration services for industrial control valves of all major brands.

Our service team ensures Performance recovery, Extended valve life, and Reduced plant downtime.



Before

After

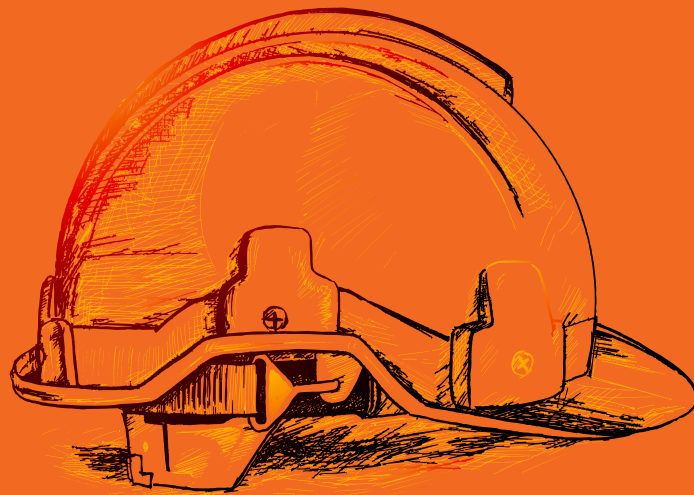
SERVICE CAPABILITIES

- Complete Valve Overhauling
- Trim Replacement & Refurbishment
- Seat Lapping & Leakage Correction
- Actuator Repair & Calibration
- Positioner Servicing & Loop Testing
- Performance Testing & Validation
- Spare Parts Replacement
- Service Support at Our Facility

SERVICE COVERAGE

- Shutdown Maintenance Support
- Annual Maintenance Contracts (AMC)
- Emergency Breakdown Service
- Workshop Repair Facility

WHERE ENGINEERING DRIVES EXCELLENCE



Industrial Control Valves & Automation Solutions
Manufactured by: ValNexis Controls

Office Address: 756, Laxmi Krupa Society, Vile Parle(W), Mumbai – 400056

Factory Address: Plot No.281/A, Road No.16/A, Wagle Industrial Estate, Thane West - 400604

Call: 073041 27675 | Email: sales@valnexus.in

www.valnexus.in